

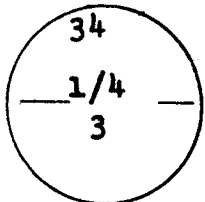
RECORDED JAN 24 1983 AT 9:45 O'CLOCK a.m.

Reception No. 684857 JANET C. WHITEHEAD, Recorder

**CERTIFIED LAND CORNER RECORDATION**

T.14N., R.70W.

DESCRIPTION OF CORNER EVIDENCE FOUND, AND ORIGINAL RECORD (If known)



Found GLO Brass Cap as described in the 1934 Dependent Resurvey.

Location easily found by reference to USGS 7 1/2' Quad Map Hecla, Wyo.

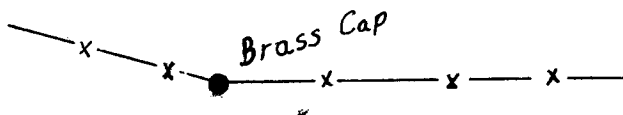
T.13N., R.70W.

DESCRIPTION OF MONUMENT AND ACCESSORIES ESTABLISHED TO PERPETUATE THE ORIGINAL LOCATION OF THIS CORNER:

NONE

SKETCH, WITH COURSE AND DISTANCE TO ADJACENT CORNER IF DETERMINED IN THIS SURVEY. (May Sketch or Paste Reproduction on Reverse Side.)

(See Map on Reverse Side)



January, 1983

I, Edward C. Fry certify that I have carefully performed or reviewed the work done on the diagrammed corner as reported on this recordation form and approve the same.

Edward C. Fry  
Signature of Surveyor

PE/LS 662  
Registration No.

STATE OF WYOMING,

Office of Clerk and Recorder,

County of Tasmanie

JAN 24 1983

This "corner record" was filed for record on the \_\_\_\_\_ day of \_\_\_\_\_, 19\_\_\_\_, was noted on the cross-index plat and is assigned page No. \_\_\_\_\_, in book No. \_\_\_\_\_.

Photographed \_\_\_\_\_

By \_\_\_\_\_

Assessed \_\_\_\_\_

Assessor \_\_\_\_\_

Janet C. Whitehead  
County Official

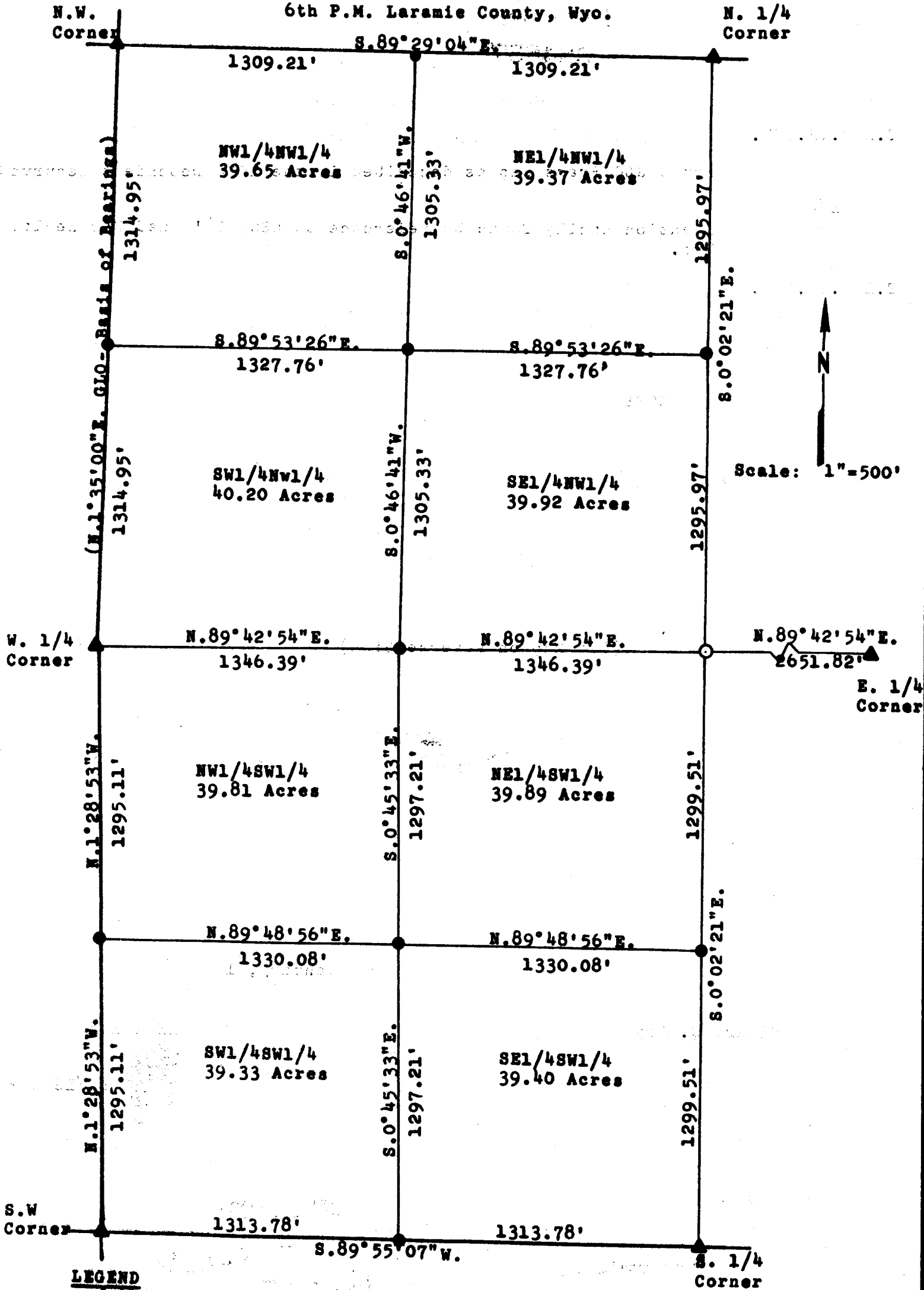
Cross Index No. _____	T. _____	R. _____	Mer. _____
_____	T. _____	R. _____	Mer. _____
_____	T. _____	R. _____	Mer. _____
_____	T. _____	R. _____	Mer. _____
_____	T. _____	R. _____	Mer. _____
_____	T. _____	R. _____	Mer. _____
_____	T. _____	R. _____	Mer. _____

684857

MAP OF SURVEY

W<sup>1</sup>/<sub>2</sub> Section 34, T. 14 N., R. 70 W.

6th P.M. Laramie County, Wyo.



Scale: 1"=500'

**LEGEND**

- ▲ GLO Brass Cap
- 1 1/2" Iron Pipe with Aluminum I.D. Cap
- 5/8" Rebar with Aluminum I.D. Cap

By reference to survey made January 1983 by Edward C. Fry.

*Edward C. Fry*  
 Wyo. Reg. P.E./L.S. # 662